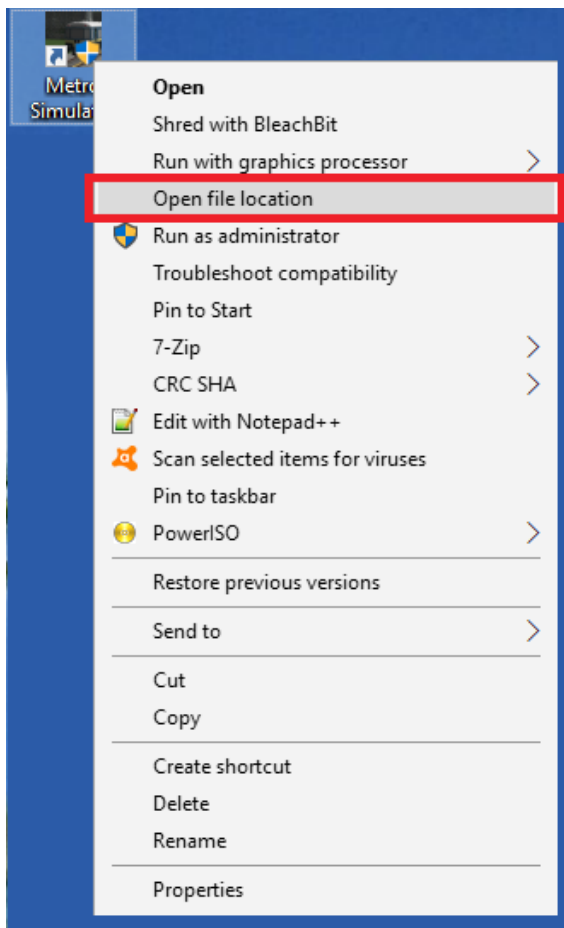
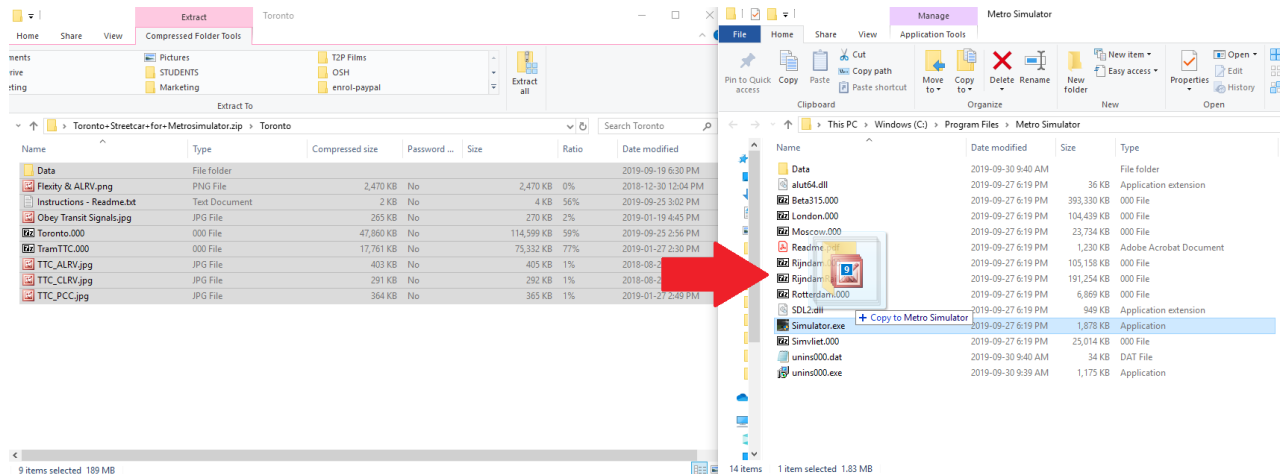




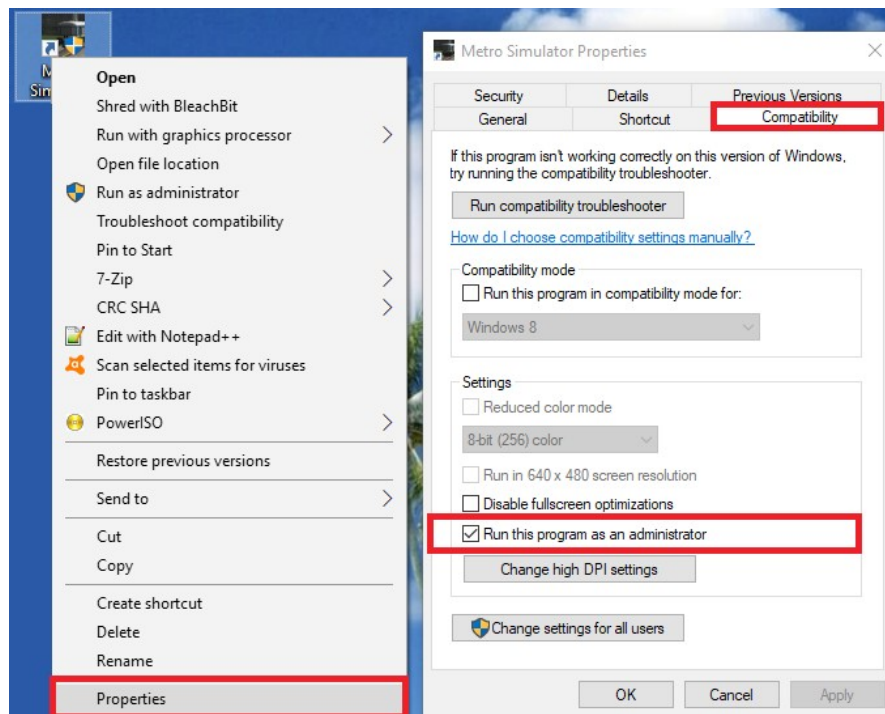
Toronto 509 Route for Metro Simulator **Installation Guide**

1. Download Metro Simulator 3.15 and install. Please note only Windows is supported.
2. Install OpenAL if not previously installed from here:
<https://sites.google.com/site/openbvesim/openAL%20Installer.zip?attredirects=0&d=1>
3. Download the Toronto 509 route. Copy the files into the Metro Simulator directory and merge with existing files. To find the directory right click on the Metro Simulator desktop icon and select **Open File Location**.





4. Make sure to run Metro Simulator as an Administrator. Right click on Metro Simulator on your desktop and select Properties, Compatibility and check the Run this Program as an Administrator box. You are now ready to start the simulator and operate on the 509.



Here is our tutorial video on how to use Metro Simulator:

<https://www.youtube.com/watch?v=sqFA6suF4mQ>

For any issues with the simulator please submit a support ticket here:

<https://help.t2pfilms.ca/index.php?a=add>

We hope to see you in our online virtual streetcar runs:

<https://ttcacademy.t2pfilms.ca/main.php>